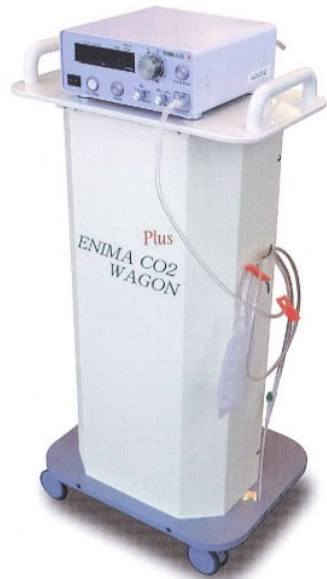


ENIMA CO<sub>2</sub>

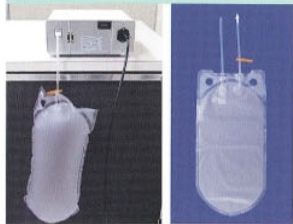
## Catherter set



## Wagon



## Gas bag



## Filter



## Kyushu Create Medic Co., Ltd.

2-48 Makiyamakaigan  
Tobata-ku, Kitakyushu 804-0077, Japan

## CT Colonography

## A patient-friendly method, CT Colonography



## Feature

- 1 Air Pump Drive**
  - The original air pump drive makes stable insufflation efficiently without relying on gas cylinder pressure.
- 2 Mode Select**
  - Auto mode: adjusts pressure automatically in accordance with flow volume and pressure within intestine, and controls gas spills in small intestine.
  - Manual mode: Pressure and flow rate adjustment can be quickly made by operator's judgement.
- 3 Flow Select**
  - Operator can select from 3 patterns of speed; Low, Middle and High.
- 4 Force Flow**
  - Releases pressure setting only during operator pushing the button, and keeps insufflating at the lowest speed (0.5L/min).
- 5 Safety Features**
  - The indicator light alerts pressure rise, and mechanical safety valve prevents excess pressure rise to ensure the safety.

Function

**Volume Liters Display**

Display shows the total amount of gas used. The device automatically stops at 4000ml.



**Pressure Display**

Display shows pressure within intestine.



**Pressure Adjust Dial**

Allows operator to select upper limit of flow pressure.

**Force Flow Button**

During pressing the force flow button, indicator illuminates and then gas is insufflated regardless the setting pressure.



An accompanying **Gas bag** enables user to retain and insufflate CO<sub>2</sub> without carrying cylinder into CT room.

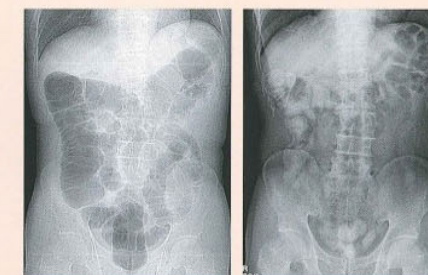


**Wagon** storing a high-pressure regulator that adjusts fine pressure is available to connect to a gas cylinder directly. Yoke-type valve for carbon dioxide of medical purpose can be connected to the wagon directly.

Quick and certain release with **Catheter Set** and a **Gas bag**. It's also easy to replace a **Filter** stored in the device.



Carbon dioxide is rapidly resorbed so that patient's feeling fullness will be resolved promptly after completion of the examination.



**Power Switch**

**Run/Stop Button**

Depression starts and stops flow.

**Reset Button**

Clears the volume display to zero when insufflation stops. It also releases when the device automatically stops.

**Flow Select Switch**

Operator can select flow rate from following 3 patterns. Flow rate changes in two steps and indicator illuminates at each step.

	( Unit : L/min )	
	1st Step	2nd Step
Low	0.5	1.5
Mid	0.8	1.8
High	1.3	2.3



**Mode Select Switch**

Operator can select pressure adjustment during insufflation from Manual or Auto.

**Safety Features**

-When pressure reaches at 60mmHg, Alert indicator lamp will be illuminated. When pressure increases more, mechanical relief valve awakes and forces exhaust to reduce pressure.

-Backflow valve is installed in the device.

